



# Cat<sup>®</sup>

## CB2.5, CB2.7, CB2.9

### CC2.6

#### UTILITY COMPACTORS

#### DESIGNED FOR RENTAL

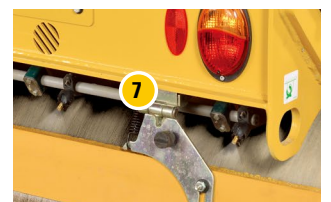
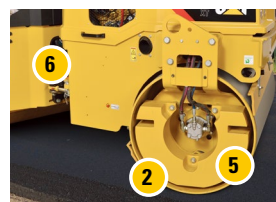
- **Simple Operation** with toggle-type switches
- **Effortless Starting** with efficient glow plug technology
- **Easy Transport** with single lift point option
- **User-Friendly Diagnostics** with fuse and relay design
- **Good Sight Lines** to drum edges
- **Efficient Work Near Curbs** with drum off-set of 40 mm (1.5")
- **Unobstructed Service Access** enhances routine maintenance
- **Versatile CC2.6 Combination Compactor** equipped with a steel front drum and pneumatic rear wheels

#### ■ Featured Equipment

- Simple Analog display
- Ballast options
- Cat<sup>®</sup> C1.5 engine
- Front and rear bumpers
- Offset Hitch
- Pressurized water spray w/triple filtration
- Traction control option
- Toggle-type switches
- 3000 hr vibratory bearing service interval



- 1 Simple Console Design
- 2 Good Sight Lines
- 3 Roomy Operating Environment
- 4 Dual Propel Lever (Option)
- 5 Ballast Addition (Option)
- 6 40 mm (1.5") Drum Offset
- 7 Reliable Water Spray System
- 8 Foldable ROPS and Canopy (Options)
- 9 Front and Rear Bumpers (Option)

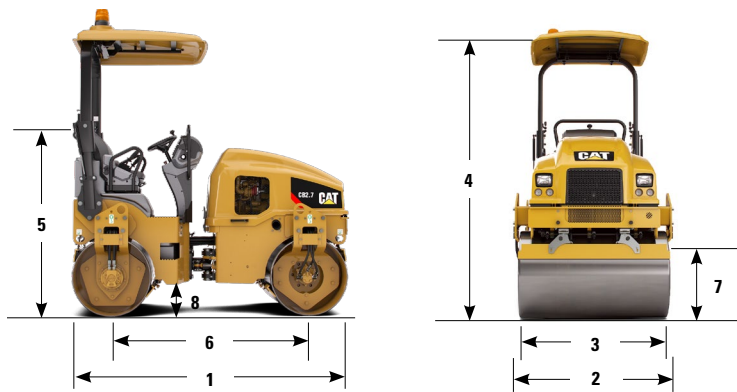


# CB2.5, CB2.7, CB2.9, CC2.6 Utility Compactors

## Specifications

	CB2.5	CB2.7	CB2.7 w/Ballast	CB2.9	CB2.9 w/Ballast	CC2.6
Cat C1.5 Engine* - kW (mhp)	22.9 (30.7)@2500 rpm					
Operating Weight – w/ROPS/FOPS - kg (lb)	2250 (4,960)	2510 (5,533)	2910 (6,415)	2700 (5,952)	3100 (6,830)	2260 (4,982)
Shipping Weight – w/ROPS/FOPS - kg (lb)	2130 (4,696)	2380 (5,247)	2780 (6,129)	2580 (5,688)	2980 (6,570)	2140 (4,718)
Max. Operating Weight - kg (lb)	2428 (5,353)	2688 (5,926)	3088 (6,808)	2878 (6,345)	3278 (7,230)	2438 (5,375)
Static Linear Load - kg/cm (pli)	11.7 (65.5)	10.9 (61.1)	12.6 (70.6)	10.8 (60.5)	12.4 (69.5)	10.0 (56)
Amplitude - mm (in)	0.56 (0.022)					
Frequency - Hz (vpm)	60/48 (3,600/2,880)					
Centrifugal Force - kN (lbF) High	28.9 (6,497)	30.0 (6,744)	30.0 (6,744)	34.9 (7,846)	34.9 (7,846)	30.0 (6,744)
Low	12.8 (2,878)	14.7 (3,305)	14.7 (3,305)	15.5 (3,485)	15.5 (3,485)	14.7 (3,305)

\* Meets emissions equivalent to U.S. EPA Tier 4 Interim, EU Stage IIIA, and China Stage III, Note: EU Stage IIIB emissions standards do not apply to this power ratings class.



## Dimensions

	CB2.5	CB2.7	CB2.7 w/Ballast	CB2.9	CB2.9 w/Ballast	CC2.6
1 Overall length - mm (in)	2575 (101)	2575 (101)	2575 (101)	2575 (101)	2575 (101)	2575 (101)
2 Overall width - mm (in)	1112 (44)	1312 (52)	1312 (52)	1412 (56)	1412 (56)	1312 (52)
3 Drum width - mm (in)	1000 (39)	1200 (47)	1200 (47)	1300 (51)	1300 (51)	1200 (47)
Drum offset - mm (in)	40 (1.5)	40 (1.5)	40 (1.5)	40 (1.5)	40 (1.5)	40 (1.5)
Drum shell thickness - mm (in)	12 (0.5)	12 (0.5)	12 (0.5)	12 (0.5)	12 (0.5)	12 (0.5)
4 Height at ROPS/FOPS wo/canopy - mm (in)	2595 (102)	2595 (102)	2595 (102)	2595 (102)	2595 (102)	2595 (102)
Height at ROPS/FOPS w/canopy - mm (in)	2700 (106)	2700 (106)	2700 (106)	2700 (106)	2700 (106)	2700 (106)
5 Transport height (w/foldable ROPS) - mm (in)	1800 (71)	1800 (71)	1800 (71)	1800 (71)	1800 (71)	1800 (71)
6 Wheelbase - mm (in)	1800 (71)	1800 (71)	1800 (71)	1800 (71)	1800 (71)	1800 (71)
7 Curb clearance - mm (in)	620 (24)	620 (24)	620 (24)	620 (24)	620 (24)	620 (24)
8 Ground clearance - mm (in)	285 (11)	285 (11)	285 (11)	285 (11)	285 (11)	285 (11)

## Service Refill Capacities

Fuel Tank – L (gal)	60	15.9
Usage (50% duty)	8-12 hrs	
Cooling System – L (gal)	10.5	2.8
Engine Oil – L (gal)	6	1.6
Hydraulic Tank – L (gal)	22	5.8
Water Tank – L (gal)	200	52.8

## Optional Equipment

- Ballast
- Battery disconnect switch
- Bio-hydraulic oil
- Bumpers
- Canopy, folding
- Cup holders
- Custom Paint
- Dual propel levers
- Edge Cutter Ready
- LED Lights
- ROPS, folding
- Suspension seat w/safety switch
- Sliding seat
- Traction control

For more complete information on Cat products, dealer services, and industry solutions, visit us on the web at [www.cat.com](http://www.cat.com)

QEHO2247-02 (7/17)

Materials and specifications are subject to change without notice. Featured machines in photos may include additional equipment.

©2017 Caterpillar Inc.  
All Rights Reserved.

CAT, CATERPILLAR, ACERT, BUILT FOR IT, SAFETY.CAT.COM, their respective logos, "Caterpillar Yellow" and the "Power Edge" trade dress, as well as corporate and product identity used herein, are trademarks of Caterpillar and may not be used without permission.

